



RDG200KN
RDG204KN

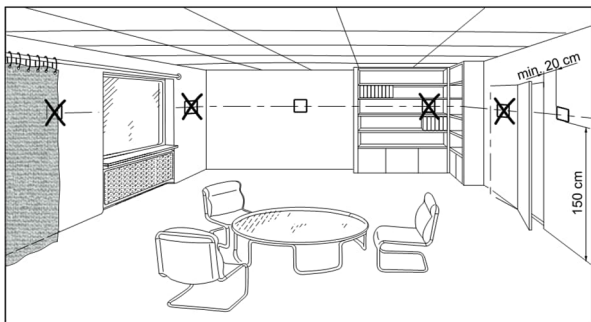


User manual, documentation
and parameters
sid.siemens.com/home

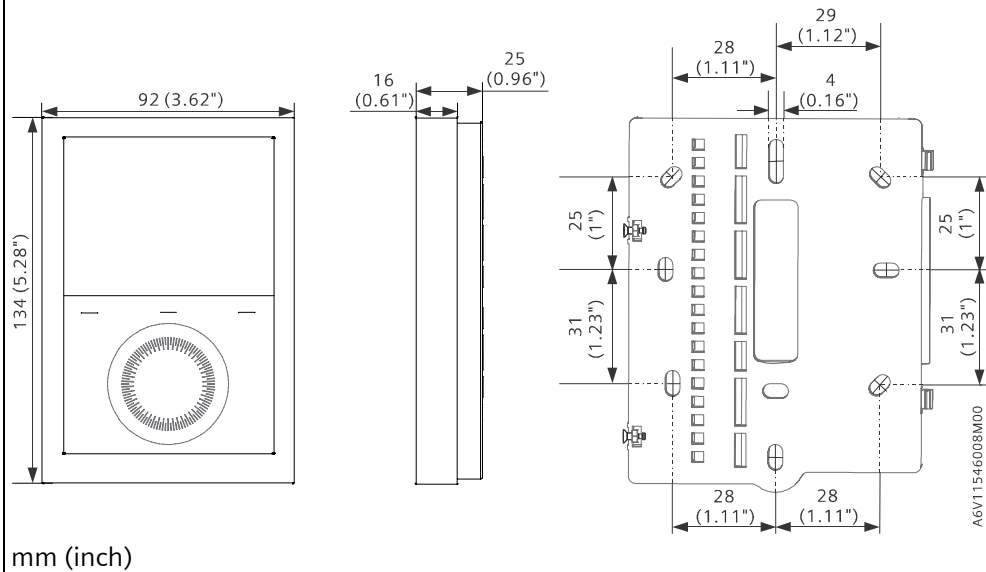
en Mounting instructions
fr Instructions de montage

de Montageanleitung
it Istruzioni di montaggio

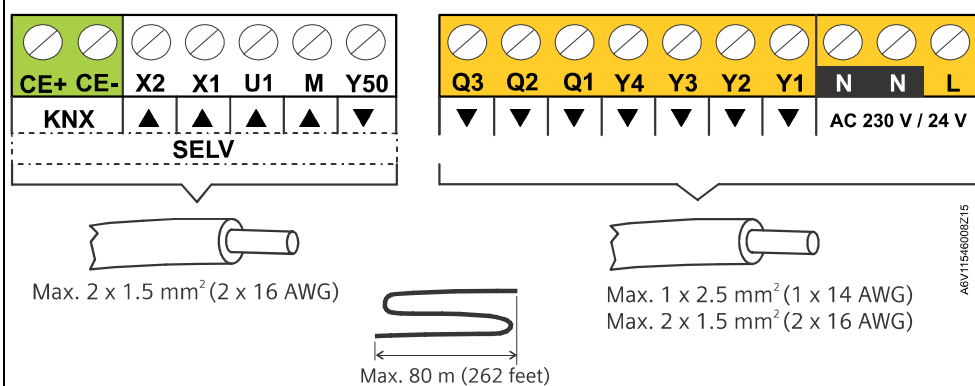
es Instrucciones de montaje
tr Montaj talimatlari



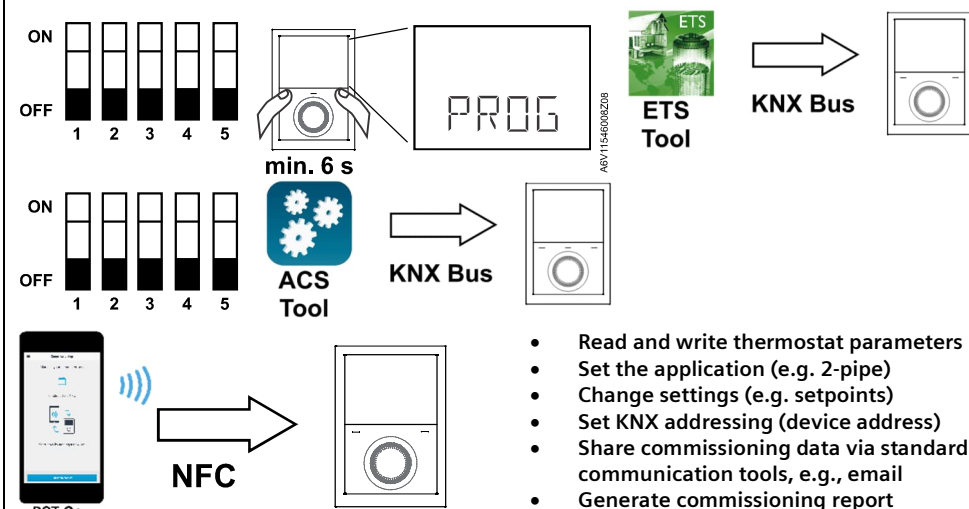
en	Not on metallic surfaces
de	Nicht auf metallischen Oberflächen
es	No en superficies metálicas
fr	Pas sur surfaces métalliques
it	No su superfici metalliche
tr	Metalik yüzeylerde değil




mm (inch)

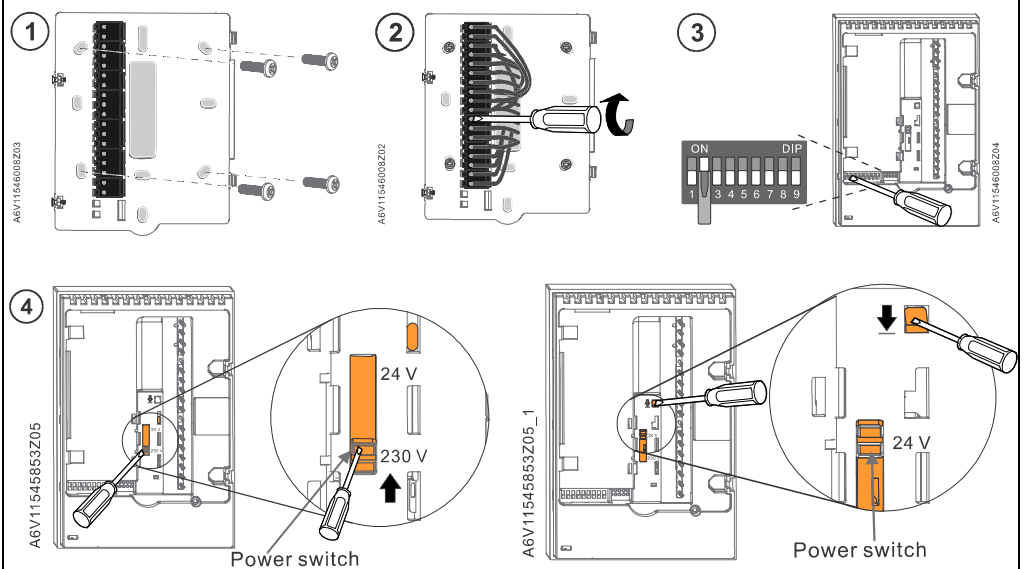


KNX programming mode and commissioning




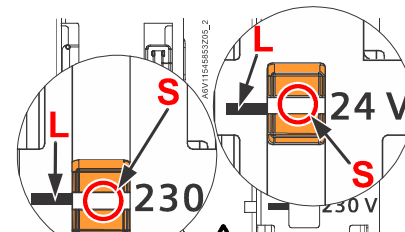
www.siemens.com/HIT

- Documents
- Parameters P001...Pn
- Humidity (r.h.)
-  IAQ (RDG204KN)
- KNX S-mode
- ...

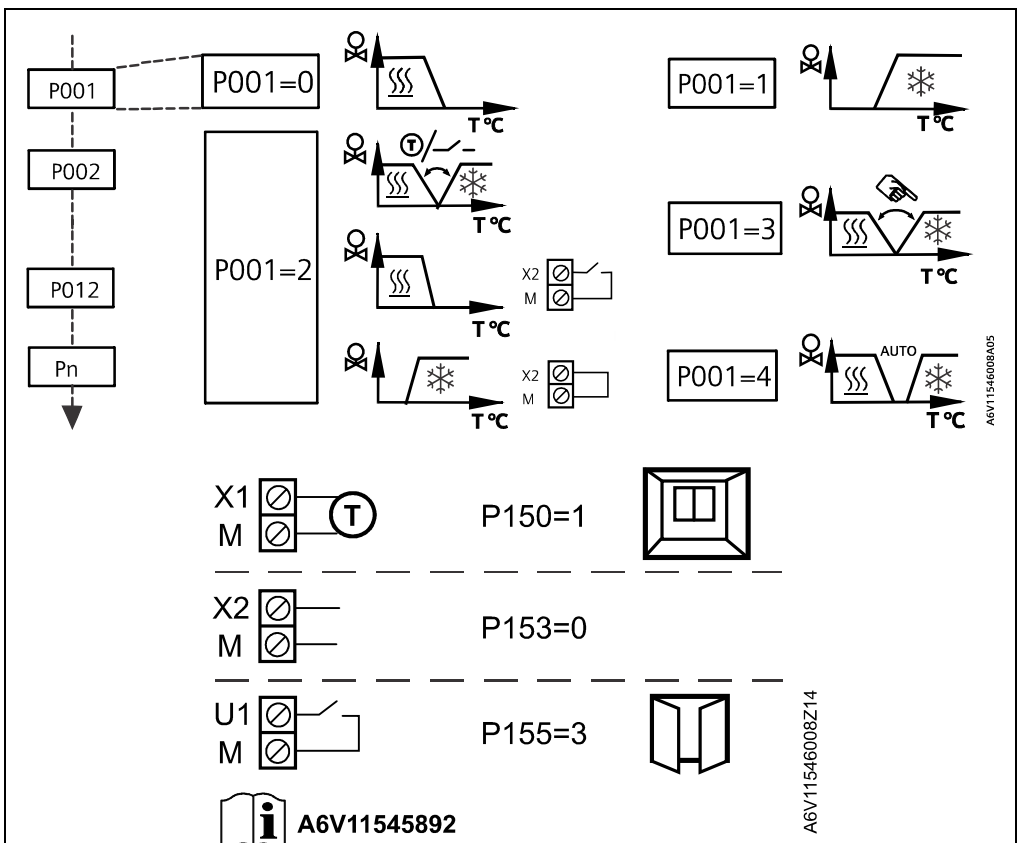
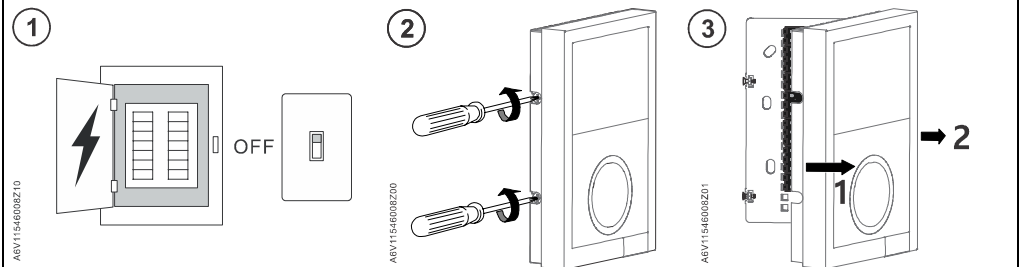
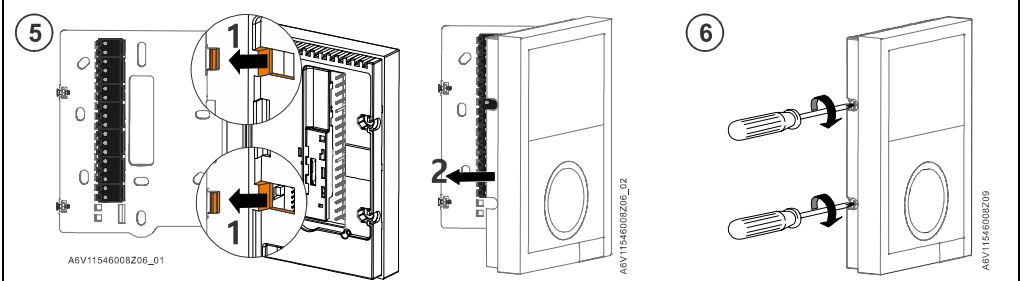


 AC 230 V \Rightarrow AC 24 V

 AC 24 V \Rightarrow AC 230 V



L & S horizontally aligned



PCT Go



A6V11546008Z14

Available on the
App Store

